



Permanent Contour[®] (Europat.)

THE INSPIRING WORLD OF HERBAL MESSAGES





Contents

Latest findings	4
Special features of salt crystals	5
Consistent treatment temperature	6
Permanent Contour® unit and accessories	7
The principle of Permanent Contour®	8
Various compositions	10
Permanent Contour® variety of pads	11 - 15
Permanent Contour® special oil mixture	16
Training	17
The new dimension of treatments performed at home	18
Patent, brand and legal protection	19
Kurland® Medical Spa-Line	20 - 23



Pure Nature.

All Permanent Contour® pads are filled with pure natural blossoms and herbs of best origin from all over the world. Most of them are hand-picked – the first evidence suggesting their value. According to latest knowledge, the ground and cut herbs and blossoms within the Permanent Contour® pads provide the optimal grain size for best treatment results. A transparent fleece allows you to actually see the natural ingredients of most pads.



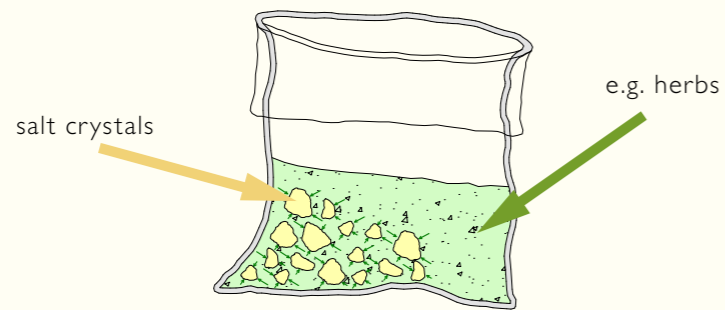
KURLAND

 With the Power of Nature



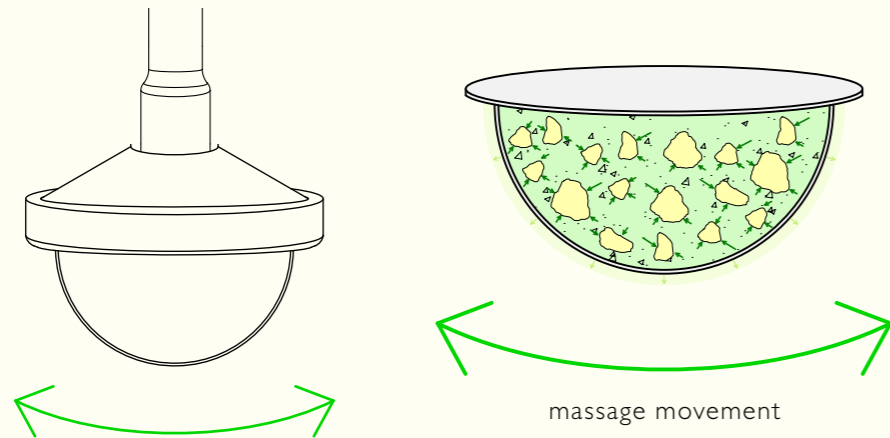
Latest findings

Salt crystals absorb ingredients from their surroundings (herbs).

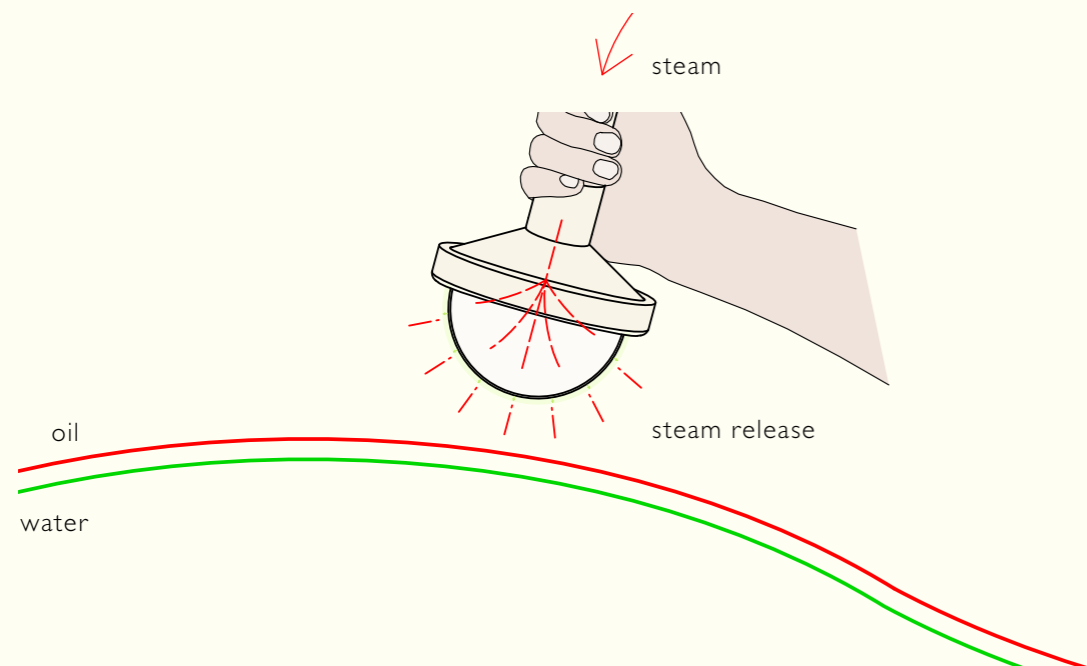


PRE-TREATMENT

The active agents get released by friction.



The steam pressure releases the active agents and pushes them onto the skin – hair movement.



Special features of salt crystals

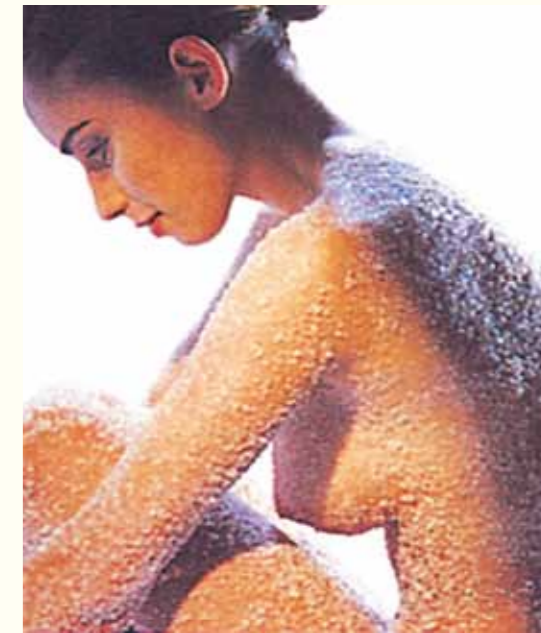
A fantastic, precious treatment that guests will recognize and value!

Herbal massages have their origins from the Asian culture. With the Kurland® Permanent Contour® brand, we successfully adapted this treatment to the European culture and the needs of the European skin. This enables us to offer guests a superb herbal massage with consistent heat and humidity.

Salt – the “white gold”

During the production of Kurland® Permanent Contour® pads, salt crystals are added to the herbs and blossoms. Thereby, water soluble active agents are embedded in the residual humidity in high concentration.

Just like a red wine spot on a table cloth, the active agent solution is absorbed by the salt and available on the surface of the salt crystals even before the treatment actually starts. The time between production and actual treatment has, therefore, be viewed as a preparation time and plays an important role in the treatment's success.



The wine glass tips over - wine spills all over the beautiful white table cloth. Now you have to act quickly in order to prevent an ugly red wine spot. The experienced house wife grabs the salt shaker and pours a small heap of salt onto the stain. The salt turns red – it soaks up the red wine. The liquids and the colour particles are deposited in the salt crystals. We made use of this characteristic feature during the development of the Kurland® Permanent Contour® treatment.

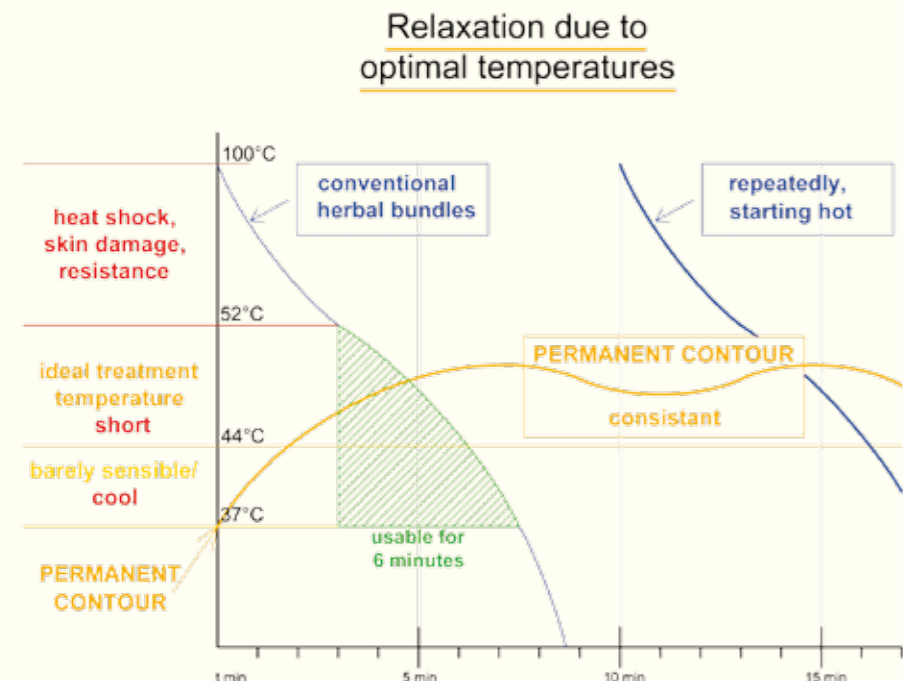
Consistent treatment temperature

Permanently steamed herbs

The steam and desired temperature produced by the Permanent Contour® unit flows evenly through the flexible hose and the herbal pad. The water soluble active agents are released and applied on the skin (hydrophilic phase). Upfront the herbal treatment, a matching special oil mix is applied onto the guests' skin. The massage movements have the oil penetrate the herbal pad and blend with the oil soluble ingredients. Again, active agents are released. Those mix up with the water soluble active agents on the guests' skin where both are massaged into the skin. The massage movements also do have a side effect: the ingredients of the herbal pads are strongly mixed and an internal friction between herbs and salt crystals is created. As a result, the content gets ideally processed for the release of active agents.



Permanent Contour® unit, portable



Permanent Contour® unit, trolley

Permanent Contour® unit and accessories

Permanent Contour® constant steam unit

A straightforward, well-engineered technique

- > setting of exact treatment temperature
- > water reservoir for 5 full body treatments
- > steady steam flow
- > high active agent release due to constant steam supply
- > automatic disinfection upfront the first treatment
- > available as a portable or trolley unit
- > little space requirement
- > the unique Permanent Contour® technology allows for an easy and economic change of herbal pads



Permanent Contour® unit, portable



Permanent Contour® unit, trolley

Permanent Contour® accessories



Handle and hose for body treatments

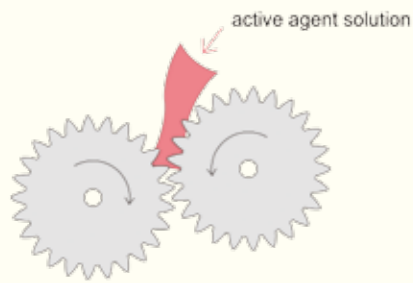
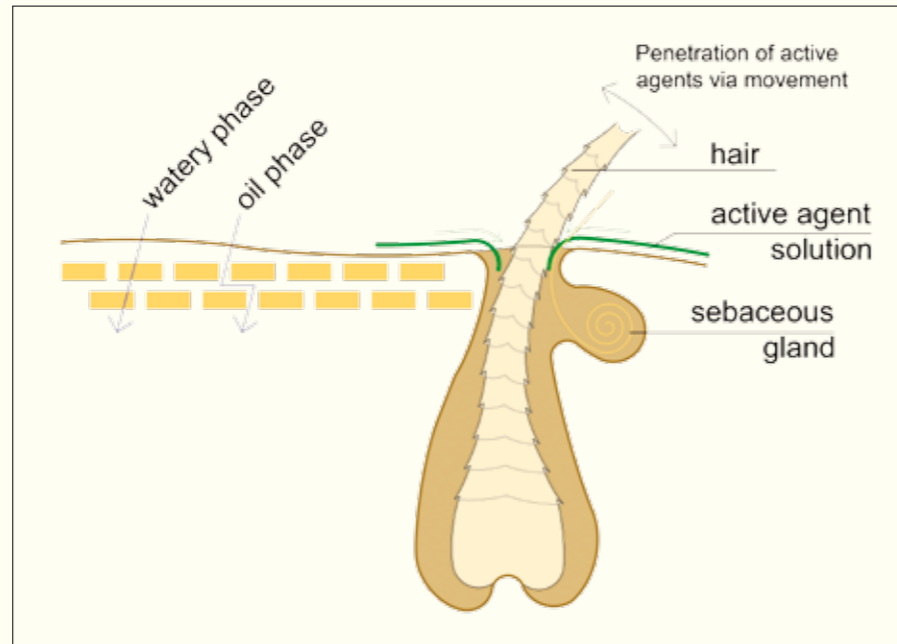


Handle and hose for facials and soap massage

The principle of Permanent Contour®

Massage movements enhance the penetration of active agents

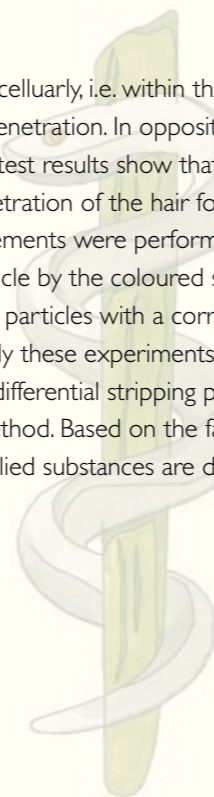
The latest medical studies help to understand the great success of massages. On moving the skin's hair the applied active agents are inevitably pushed into deeper skin layers via the follicle canal. The influx, of course, is dependent on the particle size.



The use of nano particles as carriers for topically applied substances

In the past it was believed that topically applied substances penetrate the barriers of the skin intercellularly, i.e. within the lipid layer surrounding the corneocytes. Latest research shows hair follicles as an important means of penetration. In opposition to the Stratum corneum, hair follicles prove to be a long term deposit for topically applied substances. Latest results show that especially nano particles play an essential role in follicular penetration. The study presented showed the penetration of the hair follicle by a fluorescent coloured substance of particular and non-particular form. In the first research measurements were performed on a pig's ear, which is an excellent model substitute for the human skin. The penetration of the hair follicle by the coloured substance was analyzed with the help of a biopsy. It showed that the hair follicle is easier penetrated by nano particles with a corresponding diameter than by the coloured substance of the non-particular form. In the second half of the study these experiments were repeated in vivo on the human skin. This time a biopsy was not performed. Instead they used the differential stripping procedure method. This is a combination of the traditional stripping method with the Cynacrylat stripping method. Based on the facts of the stripping method, the perspectives of the nano-particles as transportation systems of topically applied substances are discussed.

Scientific article by
Prof. Dr. Dr.-Ing. Jürgen Lademann
Charité-University, Clinic for dermatology, venerology and allergology
Department of skin physiology, Berlin



The ripe blossoms and leaves are elaboratively picked by hand.



Permanent Contour® variety of pads

Alpine herbs

face & body

This pad is dominated by valuable melilot leaves – completed with elder, ginger, peppermint and ivy. The added salt crystals promote the availability of active agents. The Alpine herb pad is one of the most precious ones with the Kurland® Permanent Contour® assortment. In combination with the massage movements, a treatment stimulates the microcirculation right below the skin's surface and helps with muscle tensions.



Various compositions

Pure Nature – there's a herb for everything!

For the Kurland® Permanent Contour® massages there is a wide range of high-quality pads as well as a special oil available. The different effects of the various compositions are ideal to create an interesting and profitable treatment program.

You get to choose from the nature's garden: 12 different pads are available from the Occident, India, the Far East and, of course, from Europe.

Pure nature – for both body and facial massages!

Plenty of possibilities

- therapeutic treatments
- treatments for the mental well-being and relaxation
- beauty treatments

The special massage and the innovative technique cater for a gentle and aimed penetration of deeper skin layers by valuable active agents.

The Kurland® Permanent Contour® pads are not fully depleted after a treatment. About 30 % of the valuable active agents remain. After the treatment you can put the pad in a small bag for your guests to re-use it at home in the bath tub or shower. A nice little gesture that will surely be remembered.

Algae

face & body

Above all, this algae pad consists of the iodized salt containing brown algae. The added salt crystals promote the availability of active agents. Brown algae are well known for their purifying and metabolism stimulating effect. Especially with problem zone treatments they are of valuable help. With this pad it is possible to specifically treat the affected area.



Wheat bran

face & body

The filling of this pad consists of the outer shell of the wheat grain – high in vitamins and minerals. Especially the availability of the minerals is promoted by the added salt crystals.

A treatment with this pad is clarifying and calms the skin. Recognizable skin inflammation are distinctly and gently mellowed.





Wine draff

face & body

This pad is filled with the residue of wine production (=wine draff). The added salt crystals are blending perfectly with the valuable fruit acids. During a treatment, the fruit acid dominates. It improves the skin's surface and its permeability.



Beer

body

This pad contains various valuable malts, hop and crystal salt. This powerful pad is calming, analgetic, antibacterial and stimulates the metabolism. Due to its scent of cereal and malt, this treatment pad is especially popular with men.



Old India

face & body

The fabulous, ample mix of herbs and spices of this pad is dominated by dried citrus fruits. A treatment is blood circulation stimulating and nourishing. Especially in combination with the special Old India oil mixture, the pad unfolds its strong, enticing fragrance.



Moor Mud

body

Purely, the Moor mud from Leopoldskron (Salzburg/Austria) and salt crystals are used for the filling of this pad. Moor mud is a therapeutically very important, complex chemical product, which cannot be synthesized. The earthy-spicy pad acts deeply due to its high share in humic acids. A treatment is anti-inflammatory, antispasmodic, hormone balancing and regenerates the skin's protective layer. The warm pad loosens the tissue and encourages the peripheral (external) metabolism. The massage movements help to push the active agents into deeper skin layers, using the hair follicles.



Salt

body

This pad is filled with the famous, pure and coarse-grained salt crystals from Bad Reichenhall. In water dissolved salt promotes the interchange of substances and supports skin regeneration, despite a sometimes slight burning sensation.



Apple Draff

body

Apples are a true anti-aging product! It's valuable ingredients stimulate the metabolism, promote the hydration of the skin and tightens the connective tissue. The contained fruit acids cater for a gentle peeling effect - for a wonderfully soft and smooth skin. The result is a slowed aging process as well as an improvement of the skin's texture. Structures of the fresh apple are able to transfer DNA messages to the skin (stem cell skin care).





Three crown chalk from the Baltic island Rügen

body

The chalk from the Baltic island Rügen (Germany) is a very valuable mud with a long tradition. Its very fine structure is one of the reasons for the success of chalk with purifying treatments. The relatively high ph-value favors the neutralization of acid deposits within the tissue.



Mallow

face

This pad is filled with mallow blossoms. Mallow blossoms are known for their anti-inflammatory, soothing and astringent effect.



Soap „Olive“

body

The valuable skin care substances of soaps are widely appreciated. The olive soap and its foam is used very successfully with the neutralization of acid depots within the tissue. During a treatment, the foam allows a smooth gliding over the skin, enabling a gentle stimulation that is so very important with drainage treatments.



Lavender

face

This pad contains lavender blossoms, elder and rosemary. A balanced, comprehensive mixture that is draining, harmonising and stimulating.



Rose

face

This pad, beside others, is filled with rose blossoms and lemongrass. This really flowery composition effects harmonising, balancing, skin nourishing and, because of its fragrance, lifts the spirits. The addition of lemongrass imparts a light, fresh-fruity nuance.



Marigold

face

This pad is purely filled with marigold blossoms. A well established, classic filling that is known for its effectiveness, especially with problem skin. It can be used for all skin types.





Permanent Contour® special oil mixture

Permanent Contour® special oil – basic

A well-balanced oil attuned to dissolve oil soluble active agents with a good penetration rate. During a treatment it spreads a pleasantly fresh fragrance.



bag-in-box with tap



convenient bag-in-box system, 3 l

Pantai Luar® / Old India special oil

This mix is based on sesame and calendula oil, enriched with the extracts of valuable herbs and spices. The friendly and exotic fragrance is an additional plus.

Basic oil mix – without essential oils

A gentle oil mix based on soy bean, almond and sesame oil. Ideal for sensitive skin. We deliberately renounced the addition of essential oils which might, occasionally, cause skin irritations. This oil mix is especially recommended for the Permanent Contour® facial massages.



Training

Become a specialist step by step!

The "Reiter Alm" is located in Ainring, a village nestled in wonderful surroundings of the Bavarian Alps, close to Salzburg. At the training centre Reiter Alm, the Haslauer company puts all its strength and competence in training those providing the treatments. You will learn about various treatments and will have the possibility of furthering your skills in practice-oriented training – far away from everyday's life.

But you can learn about Permanent Contour® not only at our Reiter Alm. We are also happy to run a training course at your site.

The special massage technique Kurland® Permanent Contour® is protected against plagiarism by means of an internationally registered trademark. A certificate confirms that each participant of this special training knows about the treatment's background and how to perform it and that the participant is permitted to offer it. During the training we make sure you will learn everything about the correct handling of the Permanent Contour® unit as well as the correct step-by-step treatment procedure.

Training duration: 2 days



KURLAND
REITER ALM
Ausbildungszentrum

The new dimension of treatments performed at home

This will make sure your guests keep fond memories of you!

With a fragrance message and a valuable home treatment, which costs you nearly nothing, you can give your guest a precious souvenir to take home after a Spa treatment.

After the treatment still 25 – 32% of active agents are remaining in the pad. Therefore, do not throw it away, but offer it to your guest along with a small bottle of plant serum for home use. Within the following 2 days, your guest will be able to re-use it. The outstanding quality of this treatment will be remembered for a long time.

The following Kurland® plant serums are available:

Cress – skin firming and smoothing

Ivy – anti-cellulite, soothes skin irritations

For easy boxing of the pad, we offer small PVC-cups with lids. Simply add a small bottle of plant serum for your guest to take home.



Pure Nature skin care box, product-ID 11002-321

An exclusive home spa treatment - the ideal retail product!

treatment manual for the home spa treatment

Patent, brand and legal protection

Your advantage as our partner!

By being a Permanent Contour® therapist, you enjoy free brand protection. This guarantees a first class quality product and treatment and protects you from plagiarism or imitation by others.

Permanent Contour® is a European patent and the name an internationally registered trademark. For your protection, anyone who uses the technique and/or name improperly without permission will have to face legal prosecution. That means for you, that nobody has the right to unwarrantedly offer your licensed treatment, often in minor quality, in your neighborhood.

Upon making your decision to take on Permanent Contour®, we warrant with an order confirmation and your acceptance an individual, free of charge license to use the European patent and the trade mark. A transfer of the license to a third party is not possible. This serves as a protection of all Permanent Contour® therapists and to keep up the quality of the treatment. True to the motto: wherever guests find Permanent Contour® in a Spa program, they will be offered the original Permanent Contour® treatment. This ensures an unvarying top quality of the treatment all over the world!

Identification duty!

Please make sure you always use the registered trademark sign with your marketing and print material, including your treatment program, identifying that you are a licensed partner of the Kurland® / Haslauer brand.

For example: "Licensed partner company of Kurland®-Haslauer." We will be happy to supply you with our logo for visual illustration.

As our partner, we will inform you as a VIP client about all the latest findings from the Kurland® Spa research. That ensures you an advantage in competition.

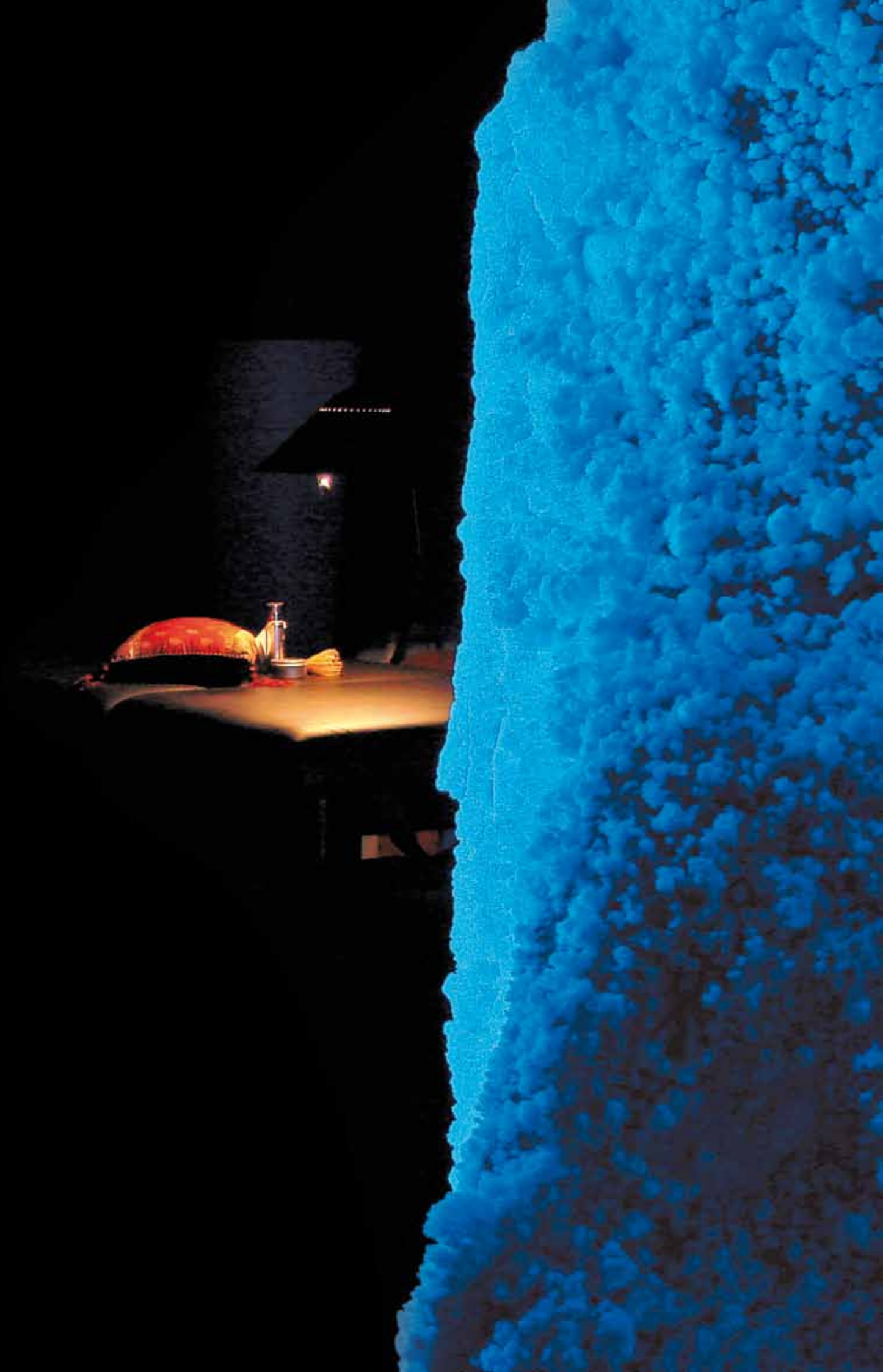


Stand out from your competitors by offering the Kurland® Permanent Contour® treatment! You are in good hands with the Kurland®-family and can enjoy many special offers and the advantage of a registered trade mark!



Kurland[®] Medical Spa-Line

To guests, the Kurland[®] Medical Spa Line is a room and treatment concept of high quality. Enthusiastic guests know about the special value of this treatment!





The “black” room

With the Kurland® double-blind system, guests are lying in a totally darkened “black room”, with all stimulants completely shut out. The center of the room houses the Haslauer Salt-Light-Rock with its brilliant salt crystals, gleaming in the most beautiful colours which are mirrored by the special black folio walls. To begin with, the therapist follows the light coming from the Salt-Light-Rock and a special tiny light spot. Later, even these two sources of light are switched off and the therapist is working in complete darkness. Now, both the therapist and the guest are ready to fully concentrate on the treatment.

This mental treatment leads to deep relaxation and later on brings a slow return to sights and sounds.

The treatments procedure in detail

- > Guest and therapist enter the room.
- > The highlighted Salt-Light-Rock and the reflection on the walls create a strong visual impression.
- > The visual and acoustic stimulation is reduced very slowly. Meanwhile, the guest lies down on the treatment table.
- > In complete silence the treatment begins.
- > After the treatment, the guest stays on the treatment table for around 20 minutes during which a heated Alpine herb or Moor mud bag provides active agents.
- > The therapist covers up the guest and ultimately ends the treatment.
- > The visual and acoustic surroundings are slowly re-established.
- > Guests will remember this treatment for a long time – “I have been the centre of attention and nothing else!”

Kurland® Medical Spa-Line

Mental treatments need visual tranquillity

Spa Treatments can not replace medical treatments; however they can definitely accompany it in a positive way and ensure the sustainability of a successful treatment. The Kurland® Medical Spa Line uses proven methods and complements those with the latest results of our Kurland® Spa Research. To ensure your success!

The new Kurland® double-blind system takes into consideration the complexity of the most successful treatment in manual therapy up to now – the massage. It is known that blind massage therapists are the best because of their pronounced sense of touch. Blind massage therapists touch the body areas being treated in a concentrated and thorough way. This is how they make up for their blindness – with great finesse. Their tactile sensors are much more sensible than the ones of a “seeing” therapist. Guests appreciate the noticeable gentleness of the therapist. All this works because a blind person is not side-tracked by visual stimulation and can fully concentrate on the treatment. The Kurland® Medical Spa Line relies on this principle. Even people who can see react to darkness by increasing their sense of touch.





Planning, concept, design and technical equipment of therapy and wellness facilities

Haslauer GmbH

Kirchenwegstrasse 5, 83404 Mitterfelden / Ainring
Germany

Phone +49 (0)86 54 / 48 87 -22

Fax +49 (0)86 54 / 48 87 -55

e-mail info@haslauer-gmbh.de, www.haslauer.info

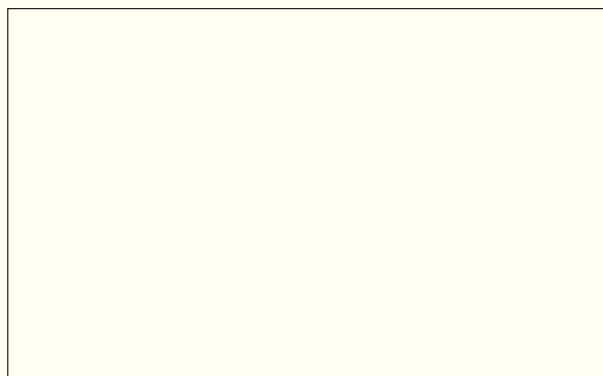
Reiter Alm Training Centre

Reit 1+2, 83404 Ainring
Germany

Phone +49 (0)86 54 / 77 88 -241, -242

Fax +49 (0)86 54 / 77 88 -245

e-mail ausbildung@reiteralm.de, www.reiteralm.de



With the Power of Nature

Balneology, naturopathy products, peloids, herbs, oils, crème bases, cosmetic concepts and high-quality consumables



Training and education in medical wellness, balneology and special massage techniques as well as creation of treatment concepts



Spa & Wellness in a fantastic location for testing and experiencing the facilities and products